

# Bond | Protect | Beautify

With our manual guns, automatic and robotic applicators, supplied by our wide range of pumps & machines for fluid handling, dosing, mixing & dispensing.

**SAMES KREMLIN** provides industrial solutions to increase production, improve quality, and material & costs savings.

We are designers and manufacturers of process equipment that is divided into 6 ranges:

**Airspray:** manufacturer since 1925, bringing you the very best of the Finishing.

**Airmix®:** creator since 1975, bringing the perfect mix between quality and productivity.

**Airless:** premium for Finishers in heavy applications

**High Viscosity:** pumping beyond possible, dispensing precisely.

**Electrostatic Liquid:** expertise for high finishing quality & efficiency.

**Powder:** Coating solutions for highest Productivity since 1960

FIND YOUR  
LOCAL CONTACT  
BY FLASHCODE:



[www.sames-kremlin.com](http://www.sames-kremlin.com)



Apply your Skills



## K3 ELECTROSTATIC



- High transfer efficiency (up to 95%\*)
- The best partner for your daily job
- The best value for money

### Related Technologies



Chevron Sealing



GT Sealing



Cup Lub



2 Ball



Triple chrome layer

Apply your Skills

[www.sames-kremlin.com](http://www.sames-kremlin.com)

# ELECTROSTATIC K3



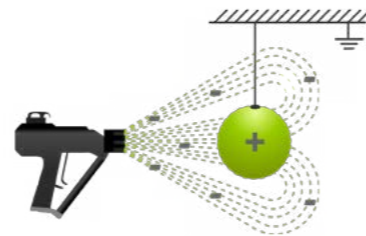
## CUSTOMER BENEFITS

- High R.O.I (return on investment) ←
- Products savings (high transfer efficiency up to 95%) ←
- Faster application time ← Increased productivity ←
- Reduced spray booth service thanks to less VOC ←
- Reduced number of wearing parts ←

## ELECTROSTATIC TECHNOLOGY

The advantages of electrostatic spraying are considerable under protection conditions where more than 15 gallons of paint is used per week.

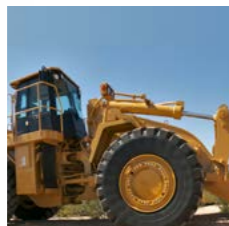
- Paint savings : 10-30% vs airspray or AIRMIX® technology
- Faster application times thanks to the ease of reaching difficult areas and a high transfer efficiency
- Better quality of coat – totally consistent layer thickness, perfect coverage of angles
- Preserved environment for the painter: elimination of overspray
- Protection of the environment – VOC emission level considerably reduced
- simpler maintenance thanks to the reduction in spray booth pollution



## MATERIAL HANDLED

Stains, varnishes and laquers, PU and epoxy materials, 2K materials, U.V paints, high solid materials.

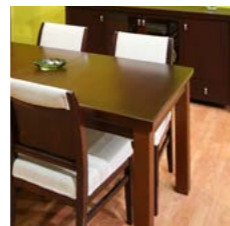
## RECOMMENDED MARKETS



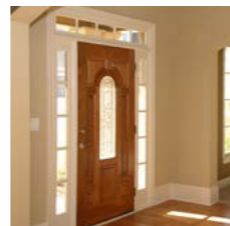
CONSTRUCTION EQUIPMENT



ROLLING EQUIPMENT



FURNITURE



EXTERIOR JOINERY

### 50% FASTER THAN COMPETITION FOR ASSEMBLY DISASSEMBLY TIME (\*)

- Reduced number of components
- Simple design
- (\*) needs personal qualified by KREMLIN REXSON

### BUILT FOR LASTING

Rugged conception

### WIDE RANGE OF APPLICATIONS

- Low / medium pressure
- Vortex / flat / hollow cone spraying
- Wrap around effect



### USER-FRIENDLY AND SIMPLE CONTROL

- ON / OFF electrostatic effect
- Fan pattern adjustment
- Needle adjustment

### OPERATOR COMFORT

- Well balanced weight
- Ergonomic handle
- No vibration

### EASY AND QUICK FLUSHING

- No product circulation close to the cascade
- Thin fluid passage
- No dead zone in the product tube

Power supply control box



### SAFETY SYSTEM

➔ Also available in H2O version